



The SBML Java™ library

# History

- Project started in September 2009
- <http://jsbml.sourceforge.net/>
- Current main developers :
  - Nicolas Rodriguez<sup>1</sup>
  - Andreas Dräger<sup>2</sup>

<sup>1</sup> European Bioinformatics Institute (EBI)

<sup>2</sup> Center for Bioinformatics Tuebingen (ZBIT)

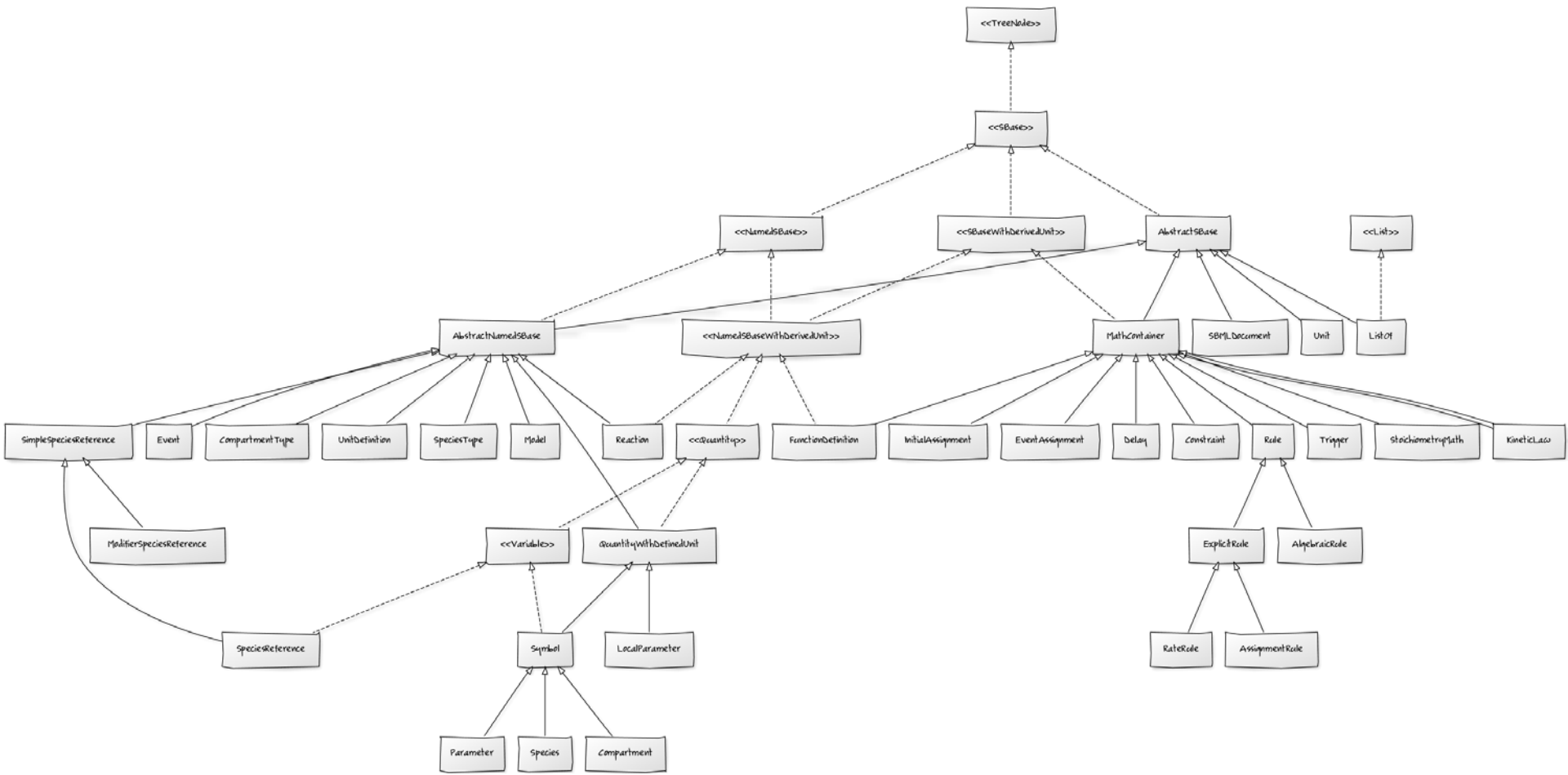
# Status

- Abstract Programming Interface as close as possible to the libSBML Java bindings API
  - Integration of the libSBML java tests files.
- All core functions implemented, need some more work/test on Notes and Annotation.
- module to use libSBML to read/write the XML files.
- Several project are already using it.
- Problem to open invalid models?

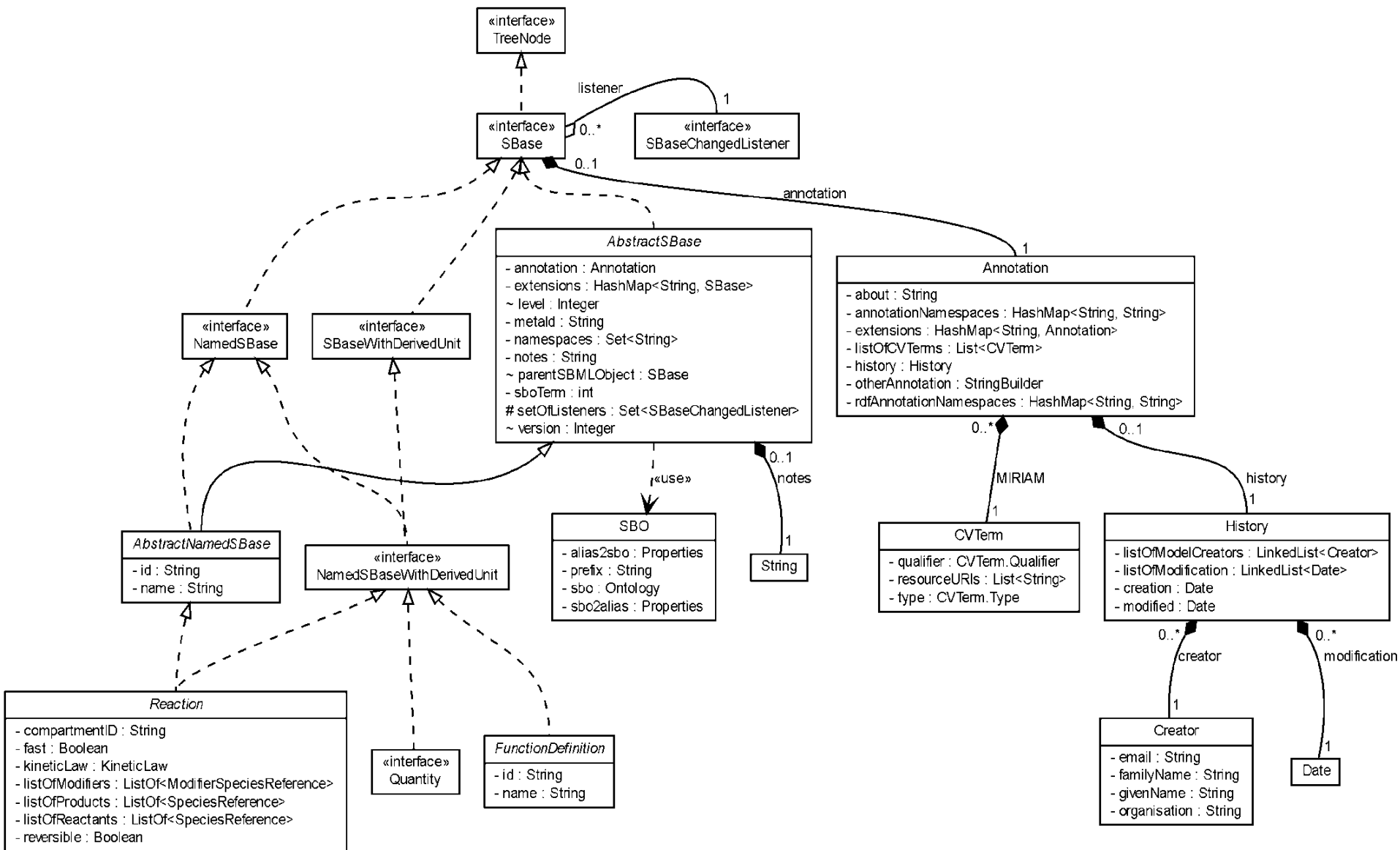
To download and build:

```
svn co https://jsbml.svn.sourceforge.net/svnroot/jsbml/trunk jsbml
ant jar
```

# Type hierarchy



# Taking a closer look...



# Roadmap

We will have a release before the end of the year  
(probably end of October or during November)

## Version : **jsbml-0.8.x**

- complete support for SBML level 2
- parse notes, annotation into XMLNode and math elements into ASTNode
- implement the functions converting ASTNode to infix formula
- Add more tests files, both tests from the libSBML java API and some new tests.
- Improve the documentation
- Submodel generation ??

## Version : **jsbml-1.0.x**

- complete support for SBML level 3 (and level 1)
- implementation of the `getTypeCode()` methods
- implementation of the `toSBML()` methods
- implement constructor and methods with namespaces
- implement a libsbml compatibility module
- have a correct indentation when writing the SBML

**Nicolas Rodriguez<sup>1</sup>**  
**Marine Dumousseau<sup>1</sup>**  
**Andreas Dräger<sup>2</sup>**  
**Clemens Wrzodek<sup>2</sup>**  
**Alexander Dörr<sup>2</sup>**  
**Sarah M Keating<sup>1</sup>**  
**Akiya Jouraku<sup>3,4</sup>**  
**Nicolas Le Novère<sup>1</sup>**  
**Andreas Zell<sup>2</sup>**  
**Michael Hucka<sup>5</sup>**

# Thanks

<http://jsbml.sourceforge.net/>

<sup>1</sup>European Bioinformatics Institute (EBI), Hinxton, United Kingdom

<sup>2</sup>Center for Bioinformatics at the University of Tuebingen (ZBIT), Germany

<sup>3</sup>Keio University, Yokohama and <sup>5</sup>National Institute of Agrobiological Sciences, Japan

<sup>4</sup>California Institute of Technology, Pasadena, California, United States