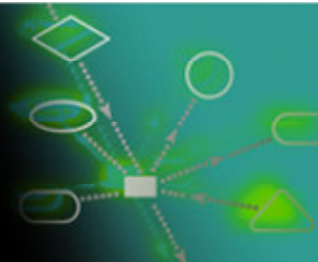




**SBML Support in
TERANODE Design Suite**
<http://www.teranode.com>

TERANODE®

TERANODE XDA Platform



TERANODE
Solutions

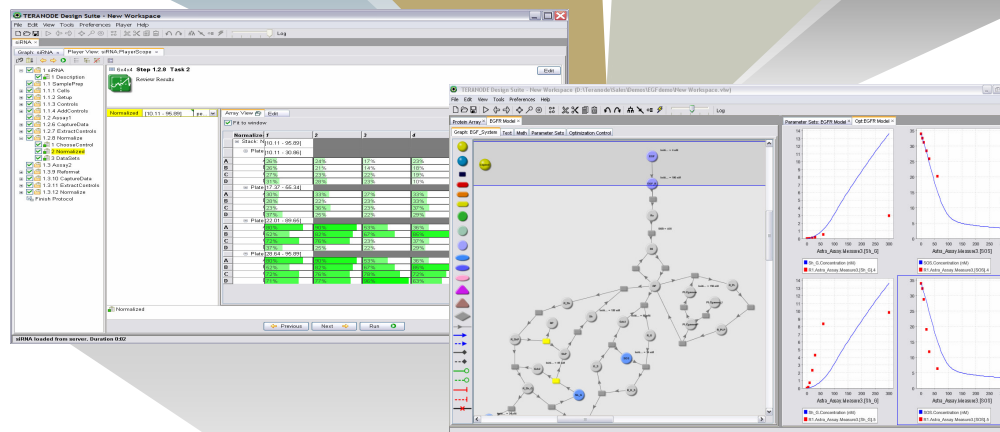
Reagent
Production

Pathway
Analytics

Sample
Management

HTS

TERANODE
Design Suite

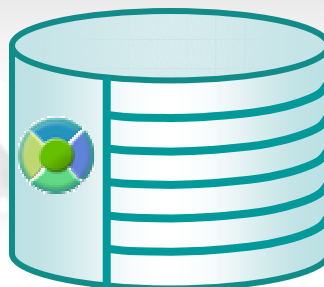


Analytics

Lab Equipment
and Systems

Systems Biology
Repositories

TERANODE
Model Server



TERANODE®

SBML Support



- Import: L1V1, L1V2, and L2V1
 - Option to do auto-cloning
 - Event not supported
- Export: L2V1
 - Some issues in lost meta info:
 - Containership (functional groups)
 - Reaction types and local variables
 - Manual layout
- Todo list: L2V2, use of SBML layout extension, and use of libSBML for validation